

Hi,

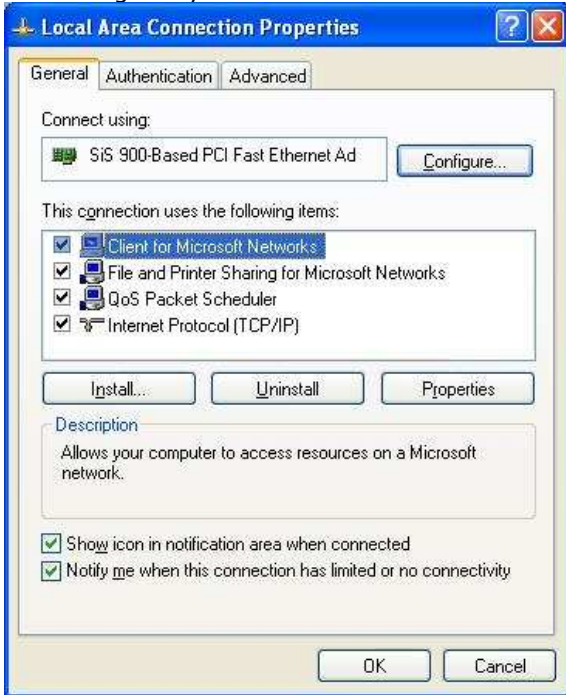
no clue if I have written anything about this here yet but there is a Tool called ImageFlashingAssistant and it does all what Dbox Bootmanager does and more.

Ideal for starters that just want to copy a Image into their Box (Boxcracker) and then FTP into the Box using Internet Explorer

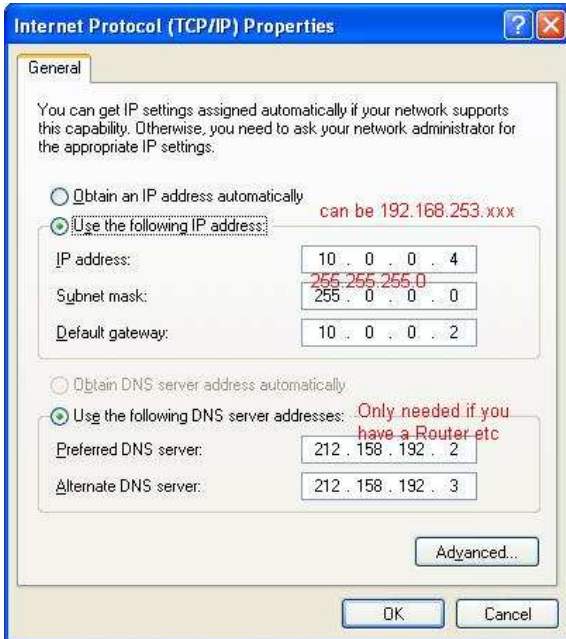
How to start:

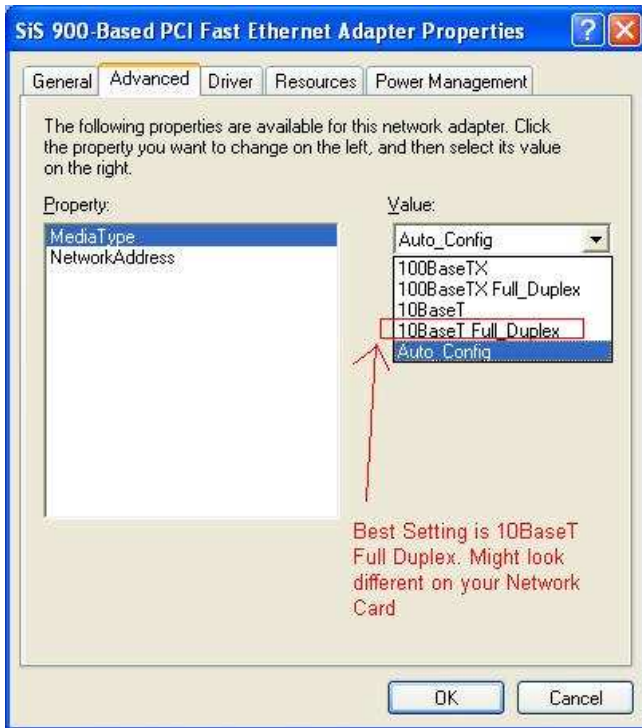
Download <http://www.dboxservice-hallenberg.de/freedownloads.php> at the very bottom in English !!!!

1st Settings on your PC



IP Settings





Hardware Settings

DBOX must be in Debug Mode already !!!

Turn off DBOX

Start Application

Choose Drive where you have the Image you want to flash

Choose the right network Card where the DBOX is connected to

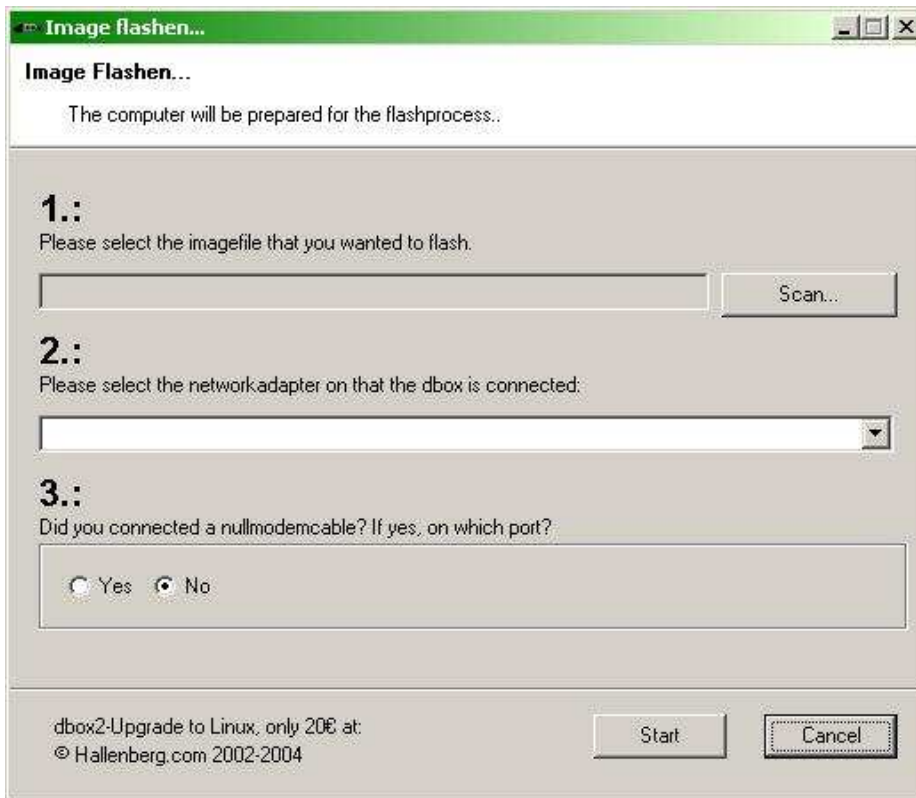
Choose if you have a null modem Cable and what Com Port

Click Start

On Windows XP SP2 you now need to click unblock

Power your Box up and the Software does the Rest

Display will say **Flashing** whilst Software is transferred and then **Flashing Done** after about 2 1/2 Minutes.



If you have any Problems doing so please press the arrow up key on the dbox for about 2-3 seconds whilst the box boots up. This starts the Memory test and gives the PC a bit more time to find the network card. You will need a serial connection in this case to the box and then Enter boot net at the Prompt.

Now read Part 2:

Part 2: **Getting your Settings.xml into your Box:**

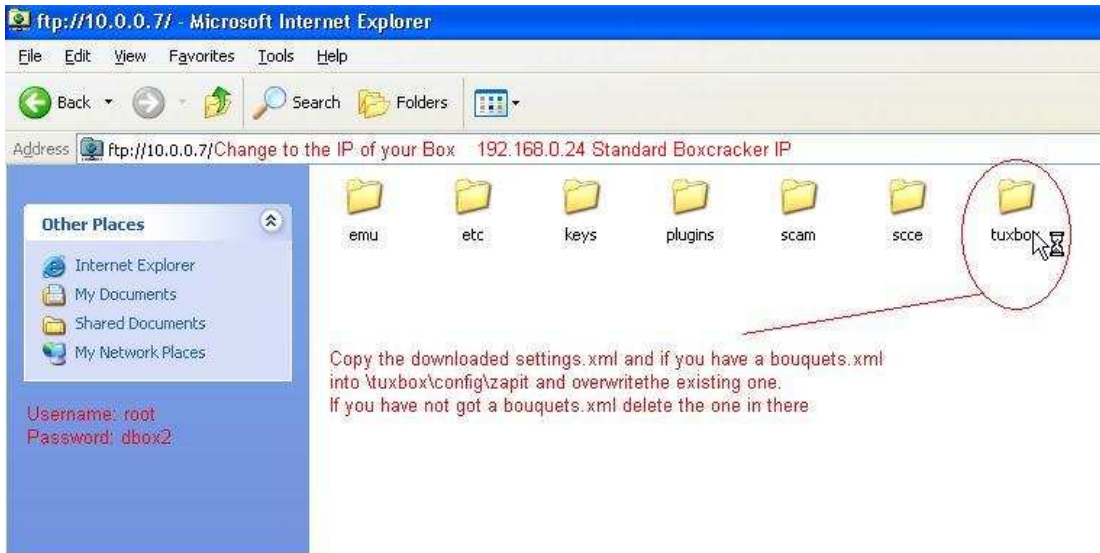
Make sure that your DBOX is hooked up to your PC with a Network Cable.

This example is for the Boxcracker Image

Download from the forum a settings.xml for the Area where you are in.

Type in Internet Explorer ftp:// and the IP address of your Box

Standard Boxcracker 192.168.0.24 !!!



Check your Network Settings:



This is in Windows XP
You need the Command
line out of the old MS-
Dos Days...
Some Windows systems
need **command** instead of
cmd !!!

```
C:\WINDOWS\system32\cmd.exe
Microsoft Windows XP [Version 5.1.2600]
(C) Copyright 1985-2001 Microsoft Corp.

C:\Documents and Settings\Administrator>ping 10.0.0.2

Pinging 10.0.0.2 with 32 bytes of data:                IP Address of your Box or for
                                                         Test Purpose even IP of your
                                                         Network Card

Reply from 10.0.0.2: bytes=32 time<1ms TTL=255
Reply from 10.0.0.2: bytes=32 time<1ms TTL=255
Reply from 10.0.0.2: bytes=32 time<1ms TTL=255
Reply from 10.0.0.2: bytes=32 time<1ms TTL=255

Ping statistics for 10.0.0.2:
    Packets: Sent = 4, Received = 4, Lost = 0 (0% loss),
    Approximate round trip times in milli-seconds:
        Minimum = 0ms, Maximum = 0ms, Average = 0ms

C:\Documents and Settings\Administrator>
```

```
C:\WINDOWS\system32\cmd.exe
Microsoft Windows XP [Version 5.1.2600]
(C) Copyright 1985-2001 Microsoft Corp.

C:\Documents and Settings\Administrator>ipconfig /all

Windows IP Configuration

    Host Name . . . . . : KITCHEN-CA8717E
    Primary Dns Suffix . . . . . :
    Node Type . . . . . : Unknown
    IP Routing Enabled. . . . . : No
    WINS Proxy Enabled. . . . . : No

Ethernet adapter Local Area Connection:

    Connection-specific DNS Suffix . :
    Description . . . . . : SiS 900-Based PCI Fast Ethernet Adapter
    Physical Address. . . . . : 00 0B 61 41 00 00
    Dhcp Enabled. . . . . : No
    IP Address. . . . . : 10.0.0.4
    Subnet Mask . . . . . : 255.0.0.0
    Default Gateway . . . . . : 10.0.0.2
    DNS Servers . . . . . : 212.158.192.2
                           212.158.192.3

C:\Documents and Settings\Administrator>_
```

Disclaimer

I nor anyone else, nor any online forum mentioned at any point in this tutorial take any responsibility for any damage to any equipment you choose to tamper with based on this tutorials information.

It is a criminal offence to connect any modified equipment to a cable feed with the intention of receiving free television. This tutorial is for educational purposes only. What you use it for is up to you.

Restart Box after that !!
Good Luck PT-1